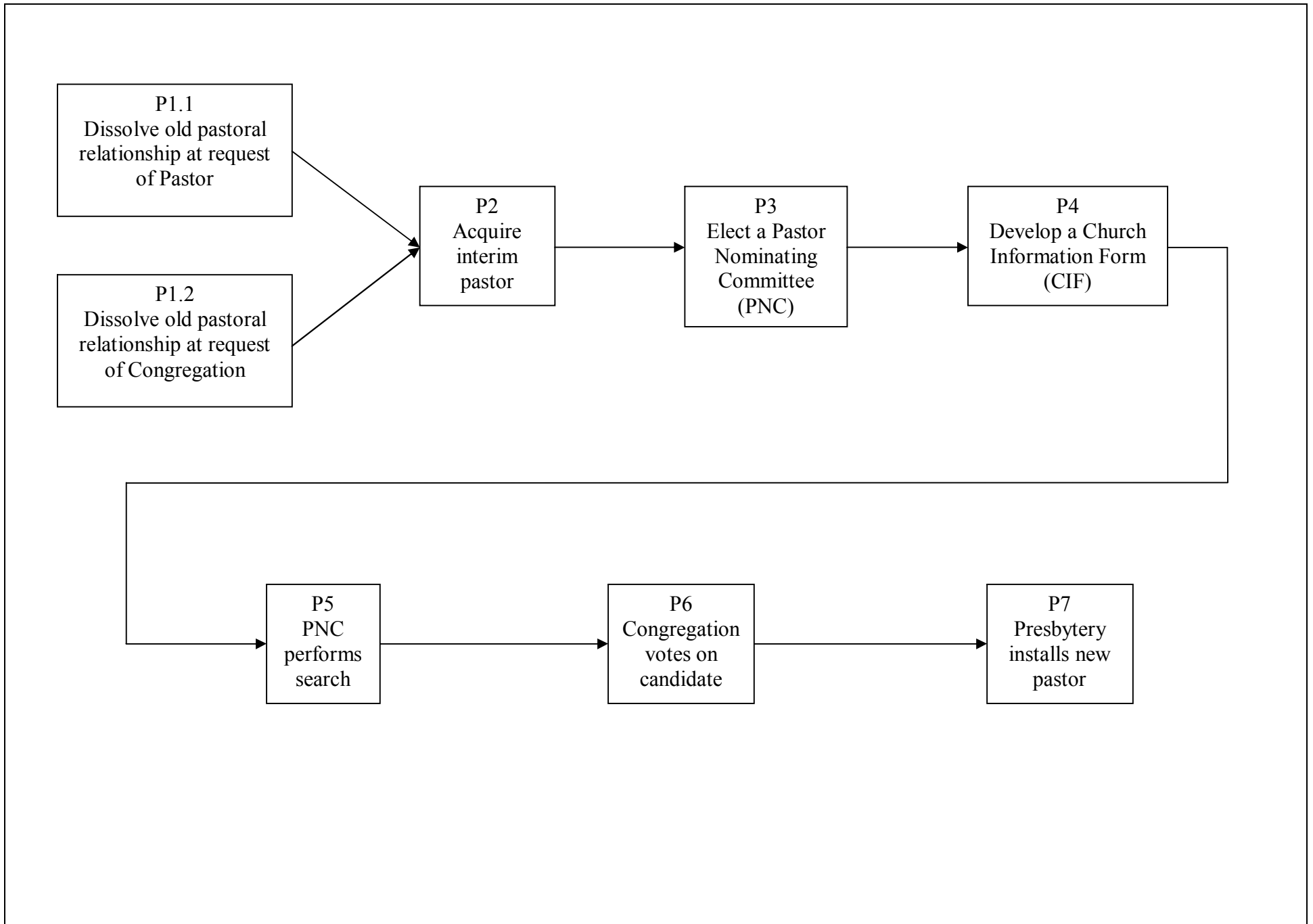
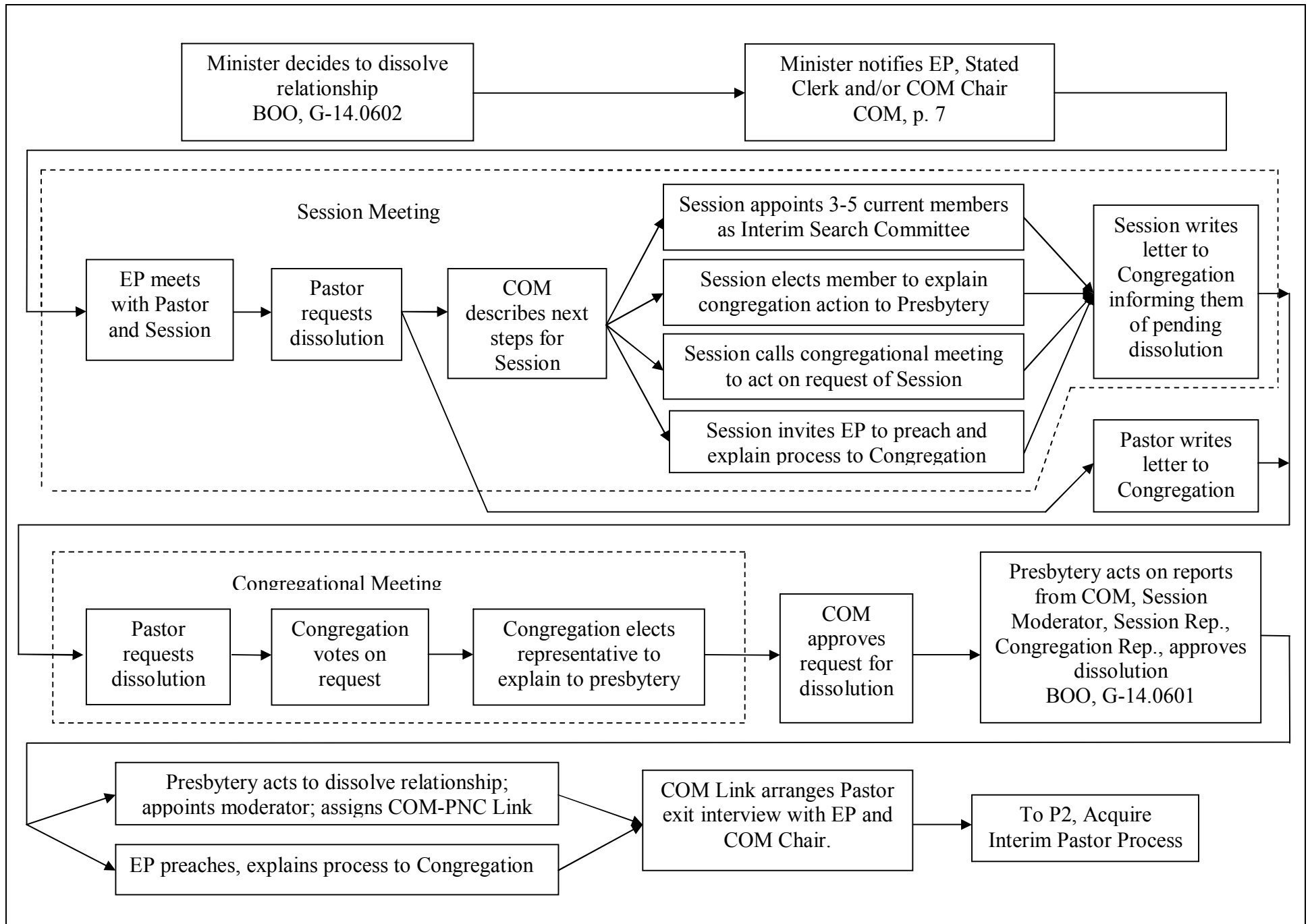


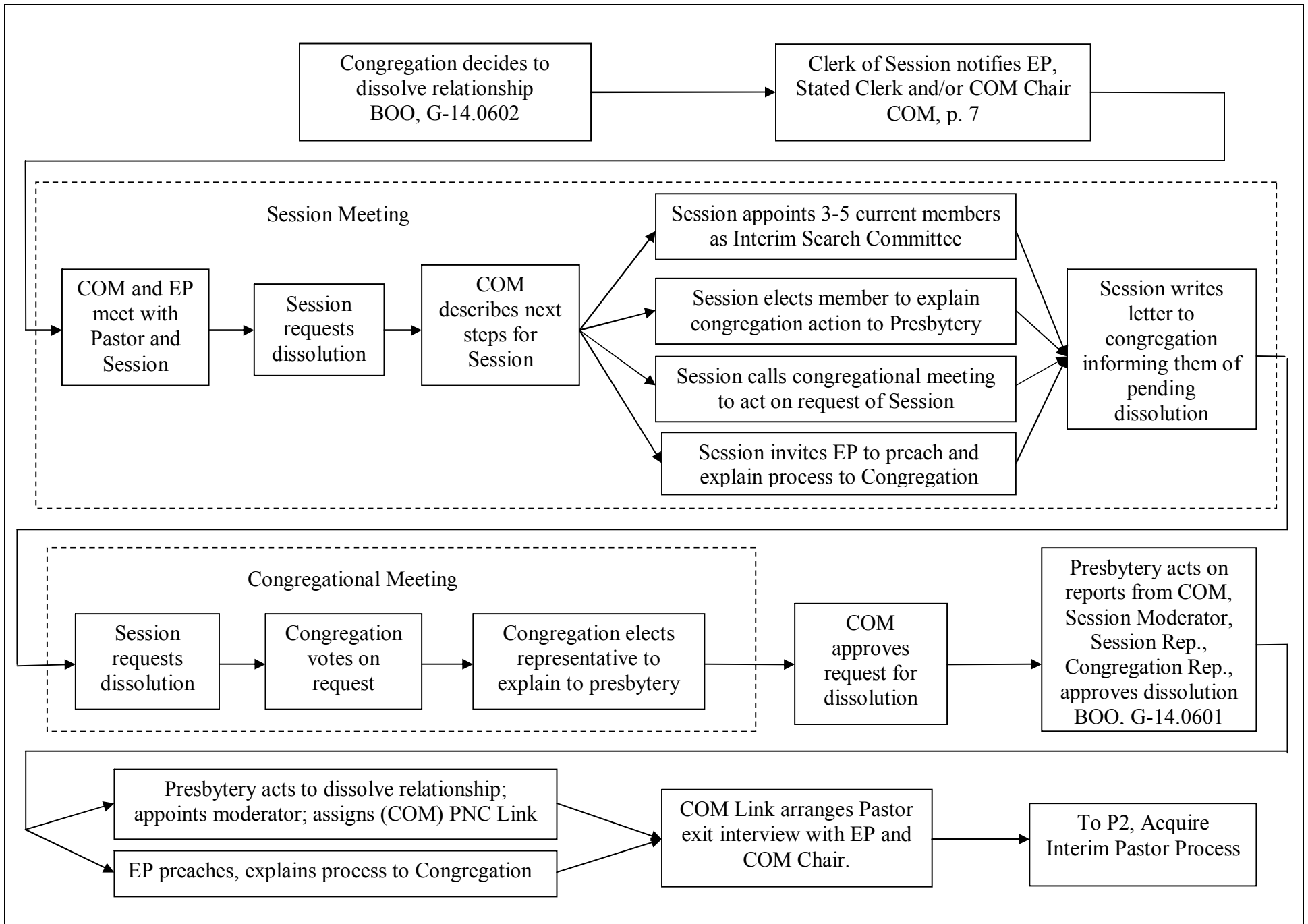
P0, CALLING A NEW PASTOR – OVERALL PROCESS



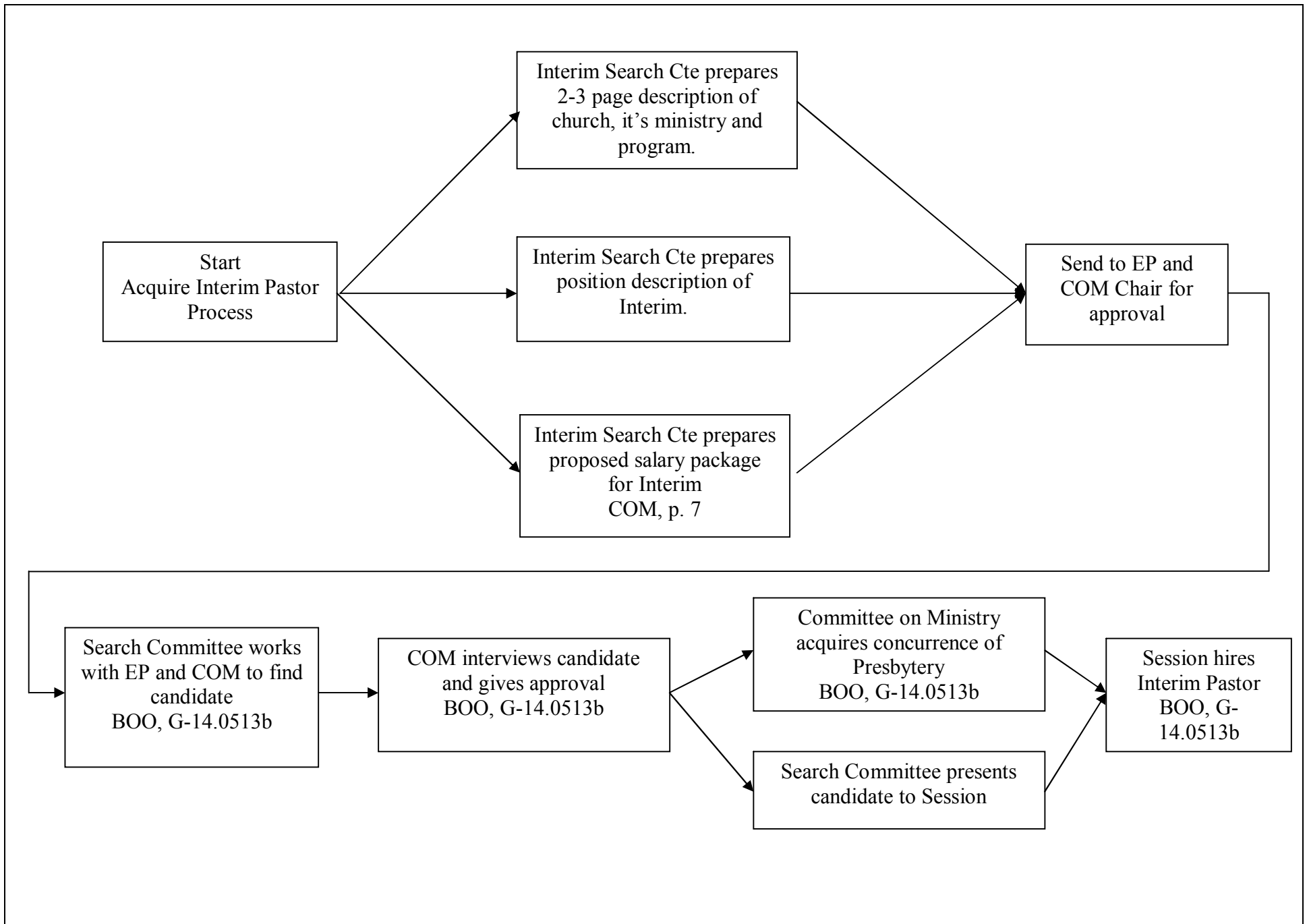
P1.1, DISSOLVE OLD PASTORAL RELATIONSHIP AT REQUEST OF PASTOR



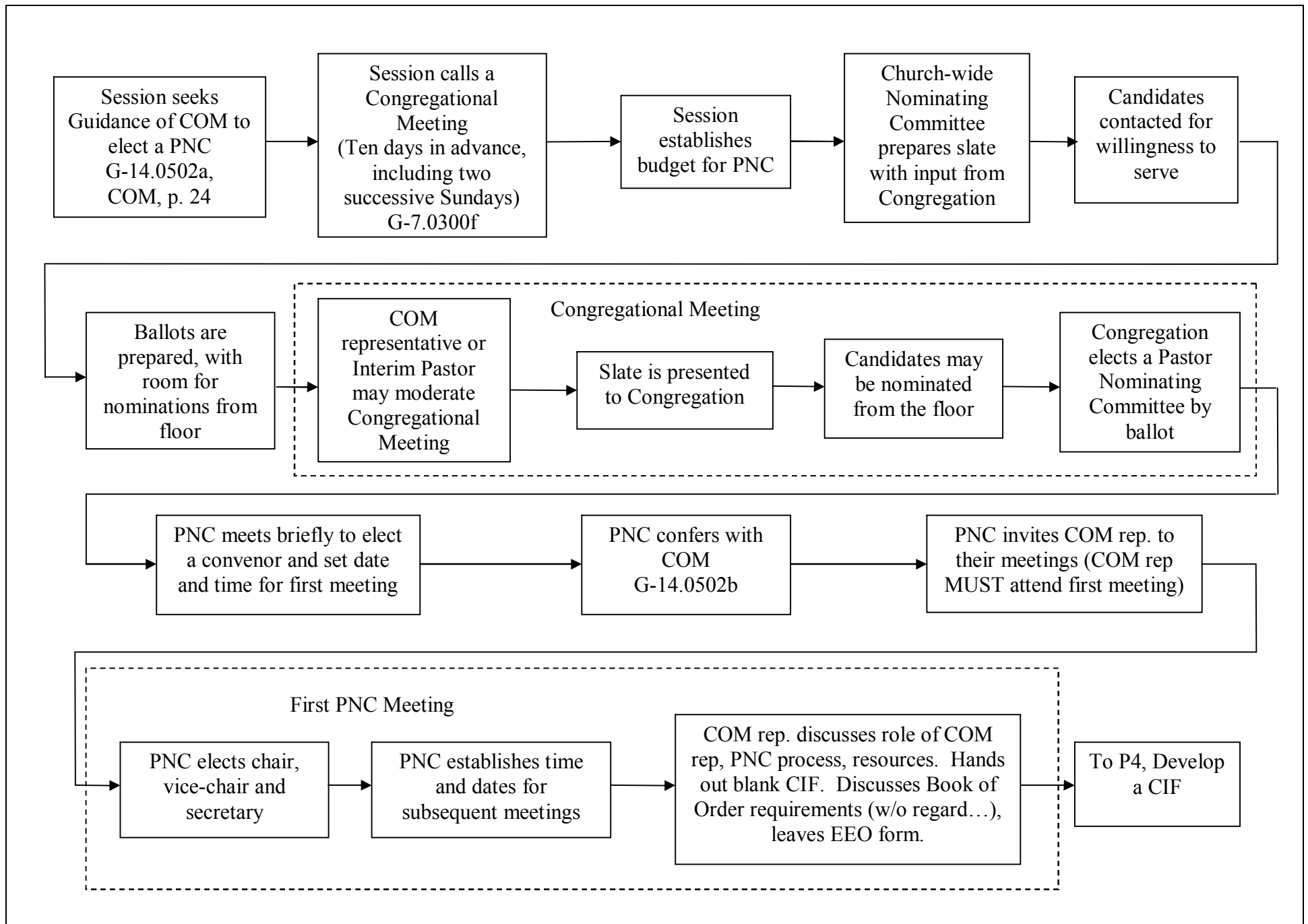
P1.2, DISSOLVE OLD PASTORAL RELATIONSHIP AT REQUEST OF CONGREGATION



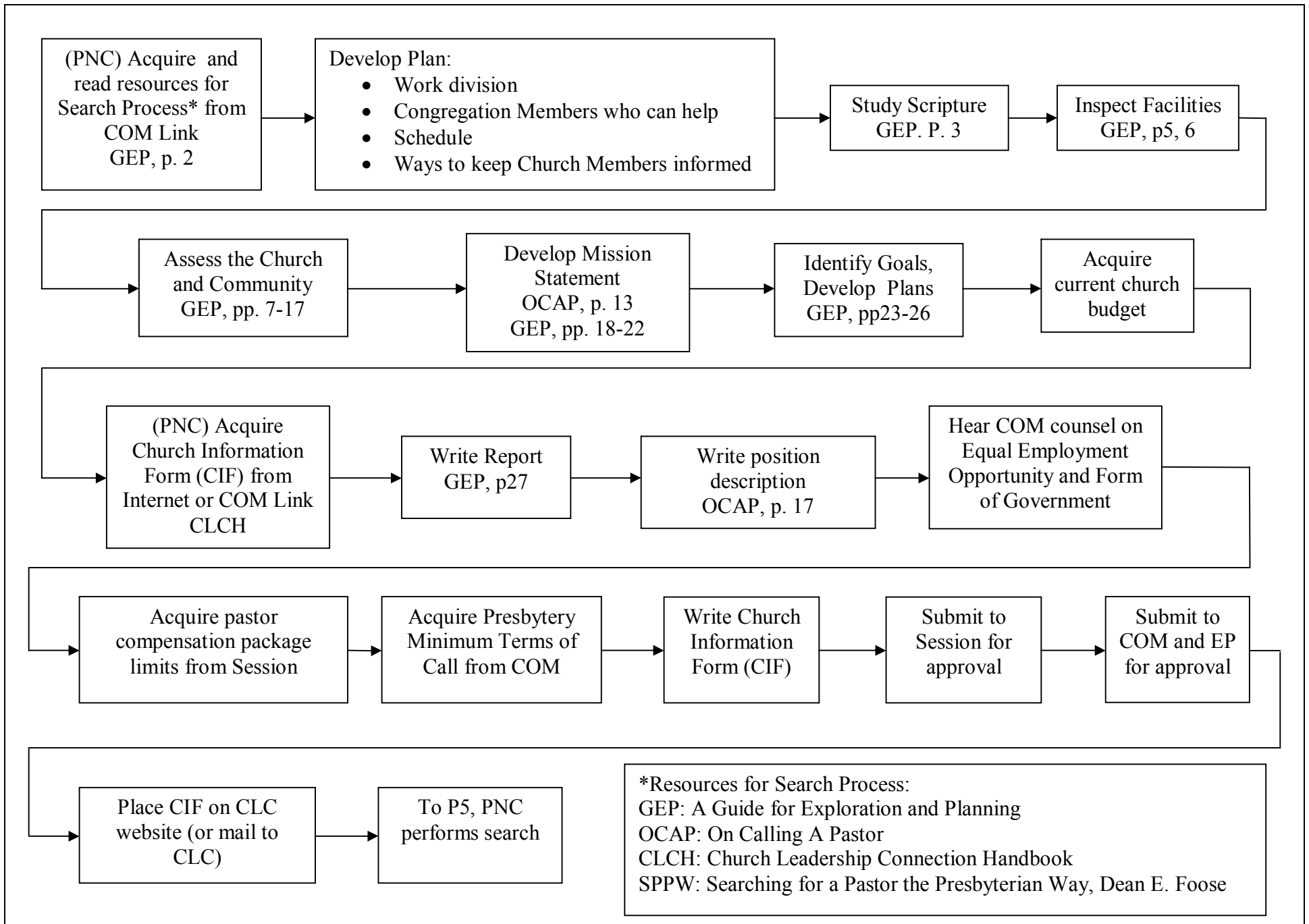
P2, ACQUIRE INTERIM PASTOR



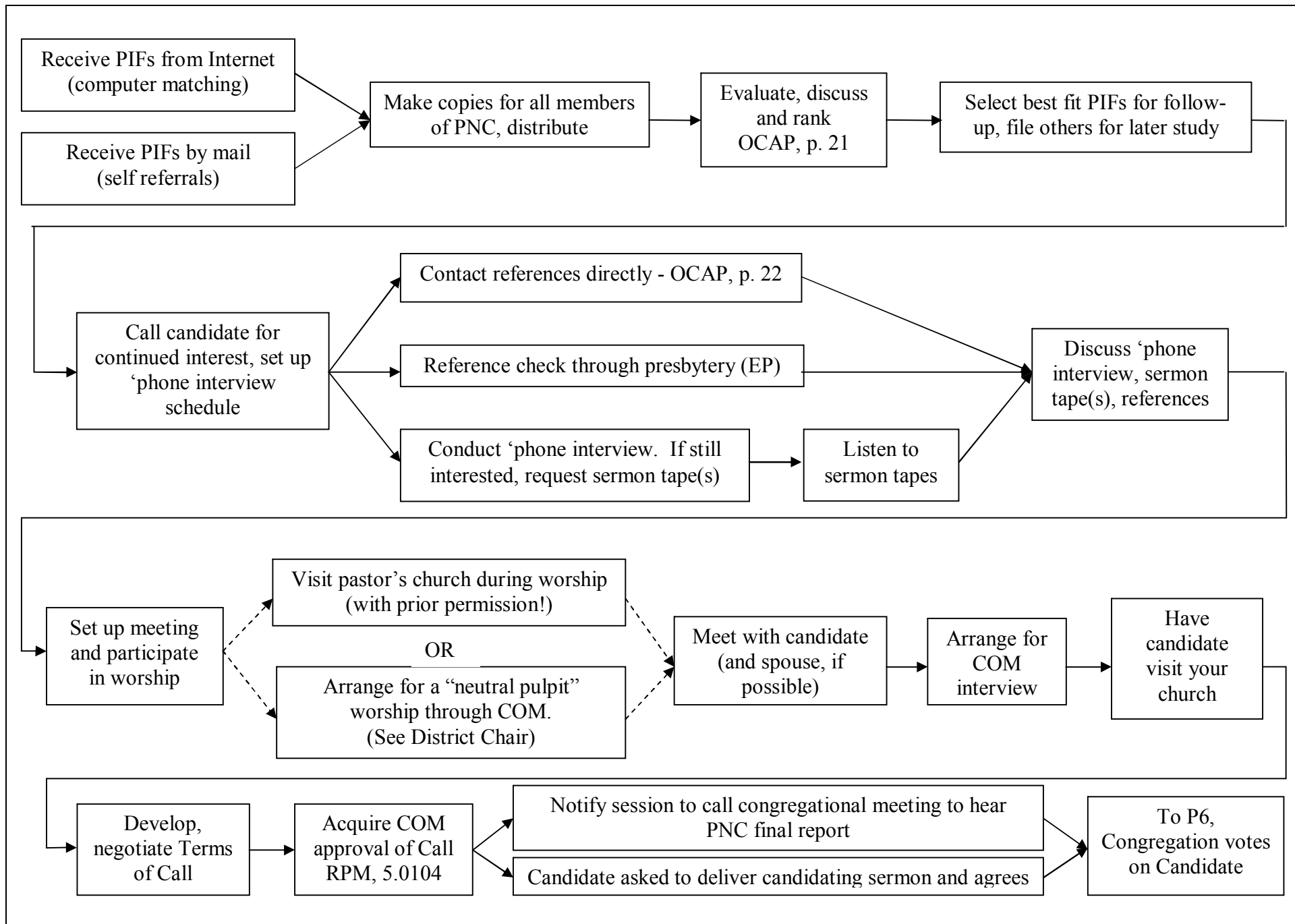
P3, ELECT A PASTOR NOMINATING COMMITTEE (PNC)



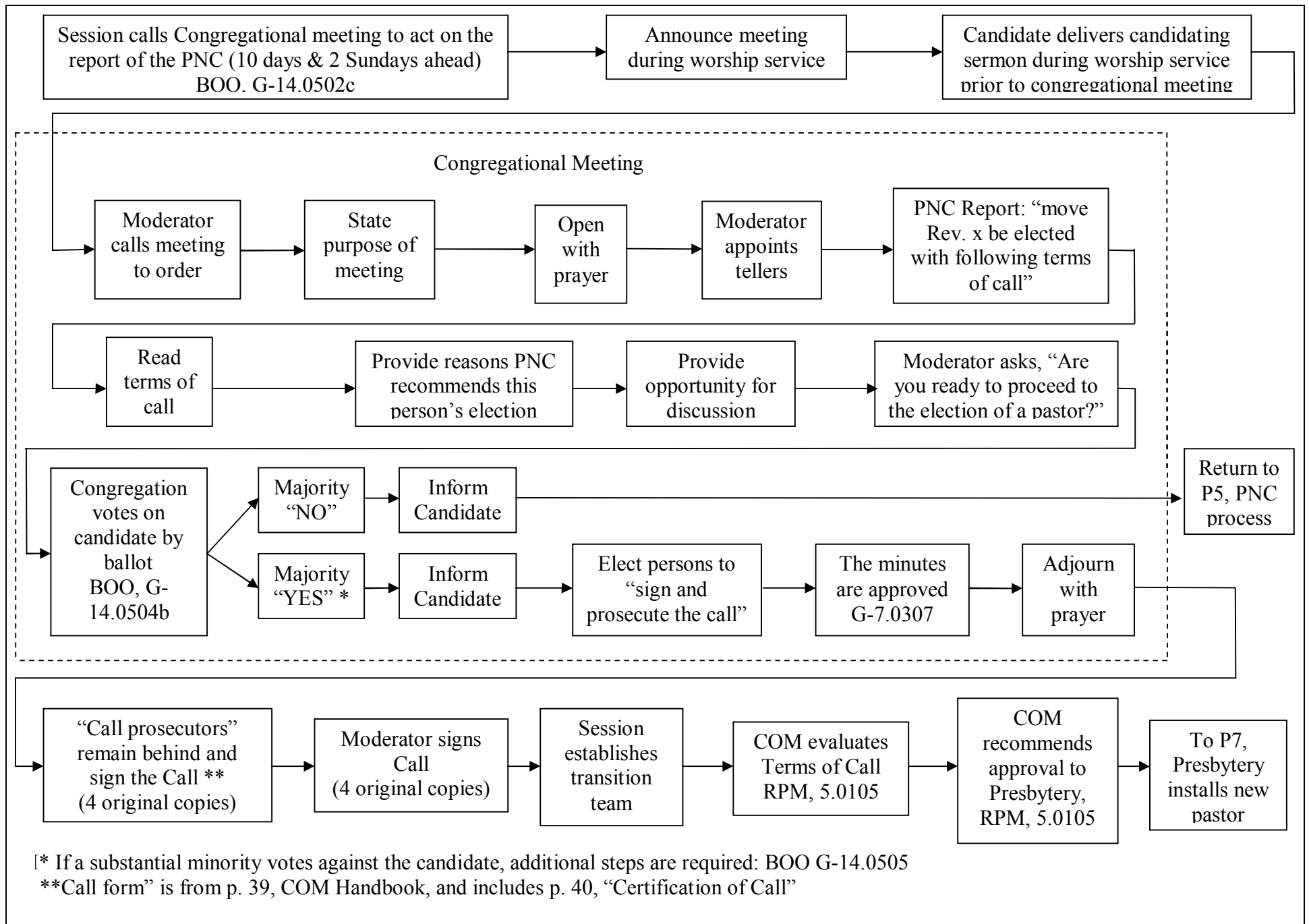
P4, DEVELOP A CHURCH INFORMATION FORM (CIF)



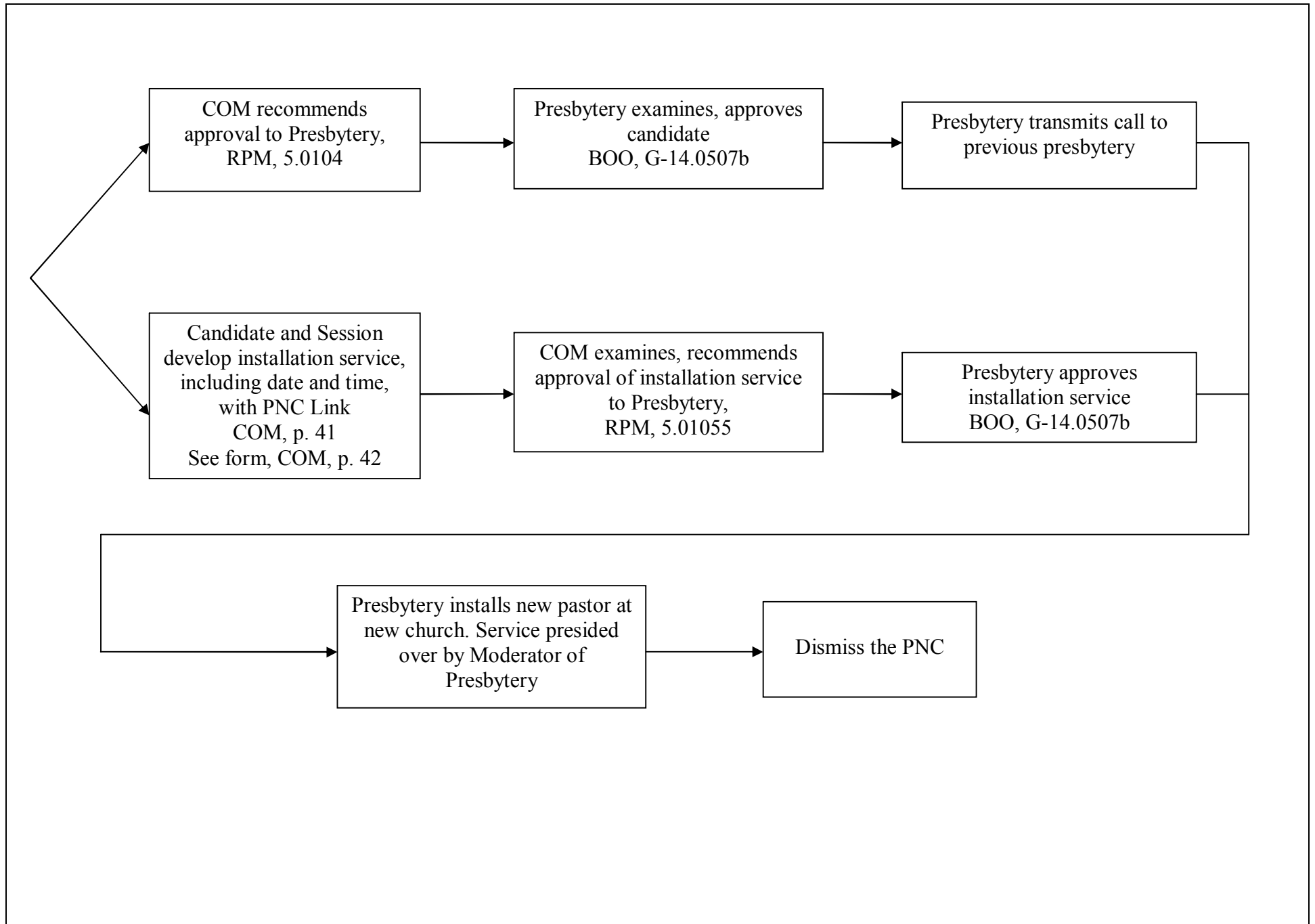
P5, PNC PERFORMS SEARCH



P6, CONGREGATION VOTES ON CANDIDATE



P7, PRESBYTERY INSTALLS NEW PASTOR



NOTES

Abbreviations used in this flowchart

BOO: Book of Order
CIF: Church Information Form
CLC: Church Leadership Connection
CLCH: Church Leadership Connection Handbook
COM: Presbytery's Committee On Ministry
EP: Executive Presbyter
GEP: A Guide for Exploration and Planning
OCAP: On Calling A Pastor
PIF: Personal Information Form
RPM: Redstone Presbytery Manual
SPPW: Searching for a Pastor the Presbyterian Way, Dean E. Foose

Traditional procedure for showing progress

Activities which have not yet started are unmarked
Activities which have started but have not completed have one diagonal line across them
Activities which have completed have two diagonal lines across them as the figure "X"

